

USER GUIDE

Trimble® GPS Studio Application


The right one.™

 **Trimble.**

USER GUIDE

Trimble® GPS Studio Application

Version 1.01.20
Revision B
July 2011



Corporate Office

Trimble Navigation Limited
Component Technologies
935 Stewart Drive
Sunnyvale, CA 94085
U.S.A.

Phone: 1-800-767-4822

www.trimble.com

Support Offices

Trimble Navigation Limited
Component Technologies
935 Stewart Drive
Sunnyvale, CA 94085
U.S.A.

Phone: 1-800-767-4822

Email: ctsupport@trimble.com

Legal Notices

Copyright and Trademarks

© 2005–2011, Trimble Navigation Limited.

Trimble, the Globe & Triangle logo, Condor, and Copernicus are trademarks of Trimble Navigation Limited, registered in the United States and in other countries.

Microsoft and Windows are either registered trademarks or trademarks of Microsoft Corporation in the United States and/or other countries.

All other trademarks are the property of their respective owners.

Release Notice

This is the July 2011 release (Revision B) of the *Trimble GPS Studio Application User Guide*.

LIMITED WARRANTY TERMS AND CONDITIONS

Product Software

Product software, whether built into hardware circuitry as firmware, provided as a standalone computer software product, embedded in flash memory, or stored on magnetic or other media, is licensed solely for use with or as an integral part of the Product and is not sold. If accompanied by a separate end user license agreement ("EULA"), use of any such software will be subject to the terms of such end user license agreement (including any differing limited warranty terms, exclusions, and limitations), which shall control over the terms and conditions set forth in this limited warranty.

Software Fixes

During the limited warranty period you will be entitled to receive such Fixes to the Product software that Trimble releases and makes commercially available and for which it does not charge separately, subject to the procedures for delivery to purchasers of Trimble products generally. If you have purchased the Product from an authorized Trimble dealer rather than from Trimble directly, Trimble may, at its option, forward the software Fix to the Trimble dealer for final distribution to you. Minor Updates, Major Upgrades, new products, or substantially new software releases, as identified by Trimble, are expressly excluded from this update process and limited warranty. Receipt of software Fixes or other enhancements shall not serve to extend the limited warranty period. For purposes of this warranty the following definitions shall apply: (1) "Fix(es)" means an error correction or other update created to fix a previous software version that does not substantially conform to its Trimble specifications; (2) "Minor Update" occurs when enhancements are made to current features in a software program; and (3) "Major Upgrade" occurs when significant new features are added to software, or when a new product containing new features replaces the further development of a current product line. Trimble reserves the right to determine, in its sole discretion, what constitutes a Fix, Minor Update, or Major Upgrade.

Official Language

THE OFFICIAL LANGUAGE OF THESE TERMS AND CONDITIONS IS ENGLISH. IN THE EVENT OF A CONFLICT BETWEEN ENGLISH AND OTHER LANGUAGE VERSIONS, THE ENGLISH LANGUAGE SHALL CONTROL.

Contents

1	Introduction to Trimble GPS Studio	3
	Features	4
	Technical assistance	4
2	Downloading and Installing the Application	5
	Downloading and installing the application	6
	Requirements	6
	Downloading the application	6
	Extracting the Trimble GPS Studio application	7
	Installing the FTDI USB Virtual COM port driver.	7
	Manually installing the driver	7
	Connecting the starter kit to the computer.	8
	Assigning the USB virtual COM port.	9
	Viewing the assigned COM ports in Windows Device Manager	10
	Disabling the Microsoft serial ballpoint driver.	10
3	Running the Application	13
	Starting the Trimble GPS Studio application.	14
	Trimble GPS Studio screen	14
	Menu bar	14
	Command bar.	14
	Status bar.	15
	Connecting the Trimble GPS Studio application to the GPS receiver.	15
	Monitor screen.	18
	Command bar	18
	Status bar.	19
4	Configuring the Receiver	21
	Configuring the GPS port	22
	Configuring outputs	23
	Configuring PPS	23
	Configuring NMEA	24
	Completing the configuration	25
5	Using the Core Tools	27
	Logging the GPS receiver output	28
	Converting output logs	29
	Sending raw data to the receiver	30
	Managing configurations	34
	Loading the configuration from the receiver.	35
	Saving a configuration file	36

Opening a configuration file	37
Configuring receivers using the Configurator settings.	38
Using the Flash Loader application.	39
6 Using the Position Map	41
Position Map tab	42
Position Plot (Horizontal, 2D) tab.	45

Introduction to Trimble GPS Studio

In this chapter:

- [Features](#)
- [Technical assistance](#)

The *Trimble GPS Studio Application User Guide* describes the Trimble® GPS Studio application, which you can use to configure GPS receivers. With a rich user interface and feature set, the Trimble GPS Studio has replaced earlier programs used for monitoring and interacting with Trimble Embedded Devices.

The application, which works with a serial connection, needs a virtual serial USB driver to work with the standard USB interface provided on GPS receiver starter kits.

Instructions for the virtual serial USB interface are included.

Features

Feature	Description
New Connection with Auto-Detect Receiver	Tests a GPS receiver port for protocol and baud rate so that you do not have to remember them when you connect the GPS Studio application to the GPS receiver.
Monitor	Shows time, velocity, position data, receiver mode and status, map functions, and an auto-query function to report satellite data, and more.
Receiver Configuration Configurator.	Enables you to configure a receiver and save its configuration Enables you to load, modify, and save receiver configurations and then apply them to additional receivers.
Data Logger	Logs the output of one or more GPS devices at the same time.
Data Converter	Converts logs from the data logger into formats used by other applications.
Generic Packets	Sends and views received raw data.
Flash Loader	Loads new firmware into the GPS receiver.

Technical assistance

If you have a problem and cannot find the information you need in the product documentation, contact the Trimble Technical Assistance Center at 800-767-4822 or email ctsupport@trimble.com.

Downloading and Installing the Application

In this chapter:

- Downloading and installing the application
- Extracting the Trimble GPS Studio application
- Installing the FTDI USB Virtual COM port driver
- Connecting the starter kit to the computer
- Assigning the USB virtual COM port
- Disabling the Microsoft serial ballpoint driver

This chapter describes how to install software and hardware needed for the Trimble GPS Studio application, and how to connect the Starter Kit to your computer.

Downloading and installing the application

Requirements

You need the following:

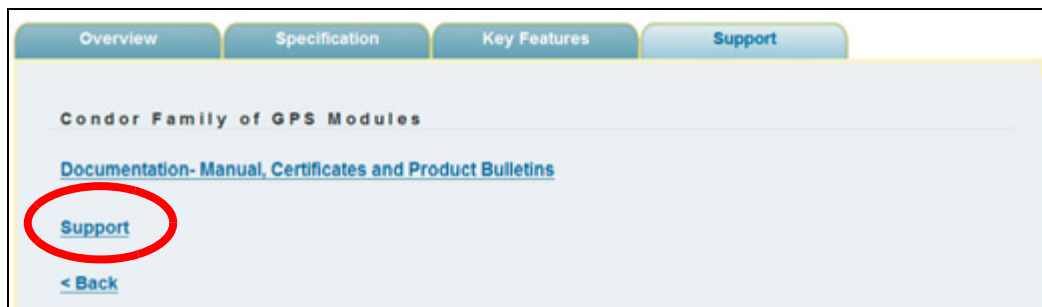
- A computer running one of the following Microsoft® operating systems:
 - Windows® 7
 - Windows Vista®
 - Windows XP with Service Pack 3
- A free USB port on the computer
- Internet access

Downloading the application

1. Go to the Trimble Support website at <http://www.trimble.com/support.shtml>.
2. In the *Support A-Z* screen, scroll to and then click the GPS receiver that is included in your starter kit, for example the Condor Family of GPS Modules or the Copernicus® II.



3. Click the *Support* tab for the selected product.
4. In the *Support* tab, select the *Support* link.



The *Support* page shows all the software that is available for download.

5. Download the files you require and save them to a folder on the computer hard drive.
 - You **must** download:
TrimbleStudio_vn-nn-nn.zip (where “vn-nn-nn” is the file version)
 - If you are not currently running the Windows 7 operating system, you **may** need:
FTDI_USB-Serial_Driver.exe.

Extracting the Trimble GPS Studio application

1. Use Windows Explorer to browse to the TrimbleStudio_Vn-nn-nn.zip file you downloaded.
2. Extract the application to a location on the hard drive.

Note – The directory you select will also become the initial default directory for logs and reports from the application.

Installing the FTDI USB Virtual COM port driver

The starter kit uses a USB 2.0 dual serial port emulator interface chip from Future Technology Devices International (FTDI) Ltd. The GPS Studio application requires the FTDI driver.

- Installation is automatic if you are running the Windows 7 operating system, have granted Windows Update permissions, and are currently accessing the Internet. In this case, continue with the procedure described in [Connecting the starter kit to the computer, page 8](#).

Note – The Windows 7 operating system automatically connects to the Windows Update website and to install the latest WHQL® (Microsoft Windows Hardware Quality Labs) Certified Available driver for the USB-to-serial emulator interface chip from FTDI. This happens when you plug in the USB cable, as long as you have an available Internet connection and if your update settings are set to allow this.

- If you are **not** running the Windows 7 operating system, you must manually install the driver that you downloaded from www.trimble.com. See below.

Note – The latest driver is available as a setup executable from the FTDI website at <http://www.ftdichip.com/Drivers/VCP.htm>.

Manually installing the driver

1. Use Windows Explorer to browse to the *FTDI_USB-Serial_Driver.exe* file you downloaded from the Trimble website (or the file from the FTDI website) and then double-click it.
2. The following message may appear: FTDI CDM Drivers have been successfully installed. Click **OK**.
3. Save any open files, close open programs and then click **Restart Now**.

Connecting the starter kit to the computer

1. Connect one end of the USB cable (supplied) to the USB connector on the Starter Kit:



2. Connect the other end of the USB cable to your computer. The USB cable now supplies power to the unit.

***Note** – Depending on the starter kit product and the antenna supplied with it, you may need to connect power supply to the power connector on the starter kit. (One or more power supply accessories may be supplied with the starter kit; accessories vary by GPS receiver product.)*

3. Connect the GPS antenna to the interface unit:



4. For the best GPS reception, place the antenna outside or near a window.
5. Optionally connect to the BNC connector on the rear of the interface unit for the PPS output:

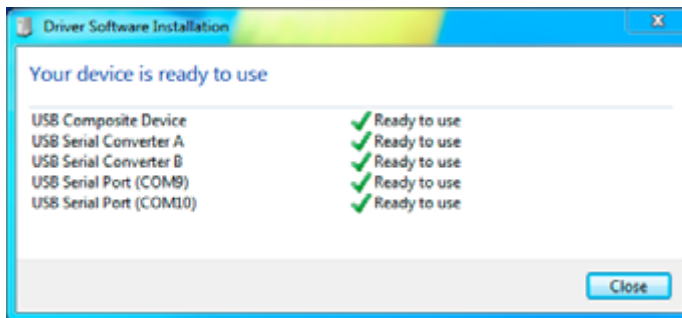


6. Turn on the GPS Starter Kit (interface) unit. The power LED lights green.



Assigning the USB virtual COM port

After you have physically plugged in the USB connectors and turned on the Starter Kit, a dialog similar to the following appears on the desktop. It indicates that the FTDI driver has automatically assigned two virtual serial COM ports to the USB port. Click **Close**.

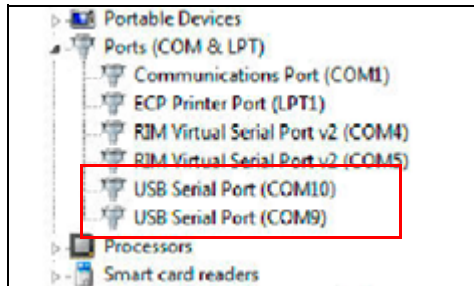


Note – When you later need to select a COM port within the GPS Studio application, these two USB Serial Ports appear in the application for selection.

Note – If the Windows 7 operating system did not automatically install a driver for the USB-to-serial emulator interface chip from FTDI, you may need to install the driver manually. See [Installing the FTDI USB Virtual COM port driver](#), page 7.

Viewing the assigned COM ports in Windows Device Manager

Expand the *Ports (COM & LPT)* node and then find the two USB Serial Port COM numbers; in this example, COM10 and COM9.

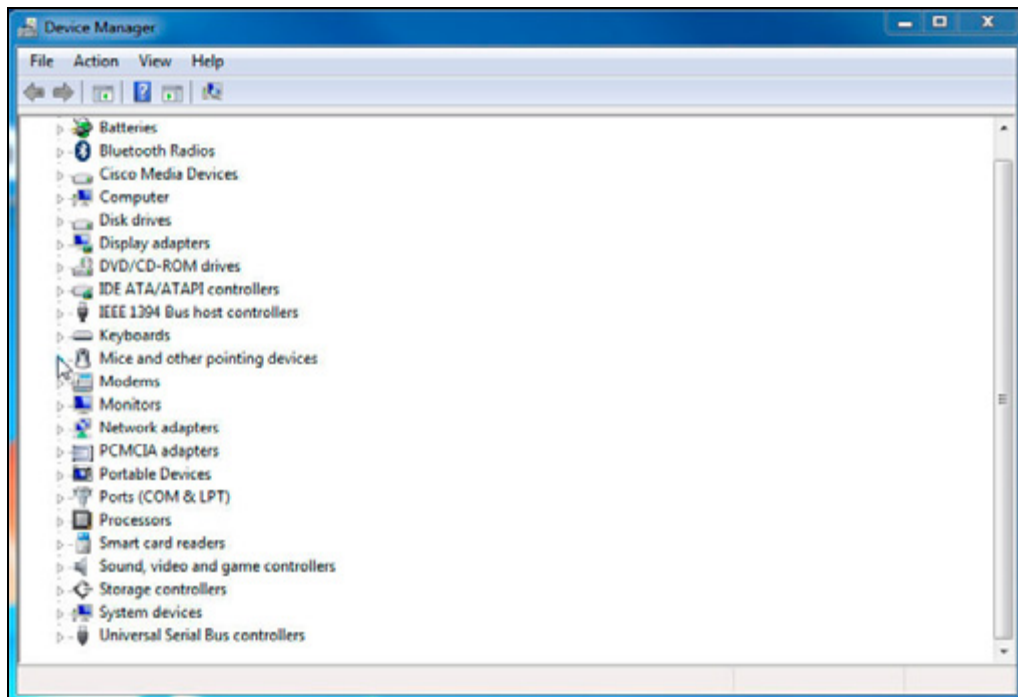


Note – In general, the COM A port of the GPS device is the lower COM number; the COM B port is the higher number.

Disabling the Microsoft serial ballpoint driver

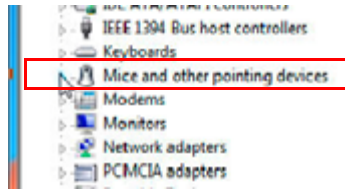
If the mouse pointer jumps around on the screen, check the system tray to see if the Microsoft serial ballpoint (mouse pointer) device has been enabled. If this is the case, do the following to disable it:

1. Turn off the Starter Kit to stop the pointer jumping.
2. On the computer, open the *Device Manager*:

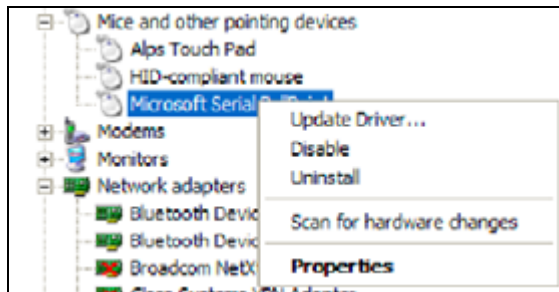


Note – In the Windows 7 Start menu, enter **Device Manager** in the Search field and then select it from the results list under the Control Panel heading.

3. Expand the *Mice and other pointing devices* node.



4. If *Microsoft Serial BallPoint* is listed, right-click it and then select *Disable*.



5. Turn on the starter kit.

Running the Application

In this chapter:

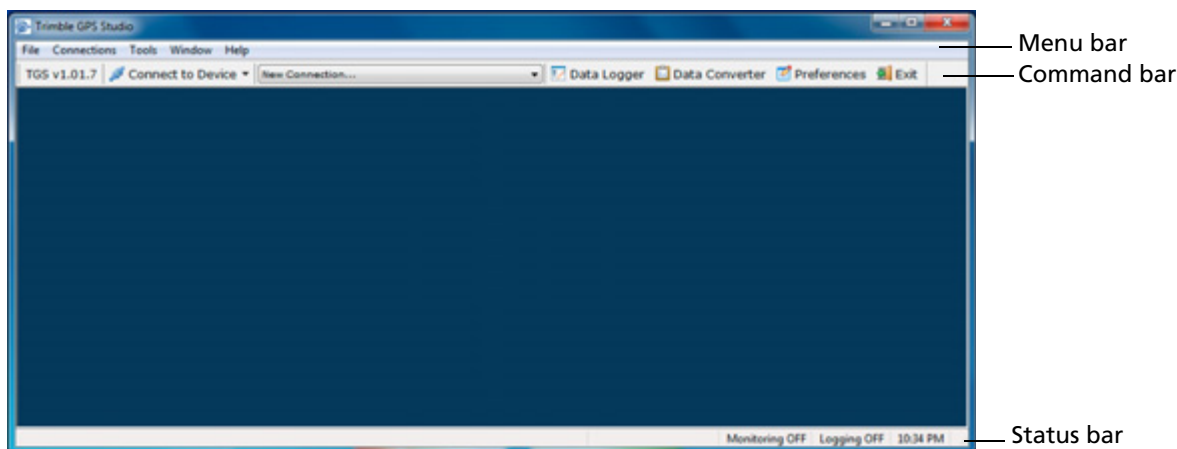
- Starting the Trimble GPS Studio application
- Trimble GPS Studio screen
- Connecting the Trimble GPS Studio application to the GPS receiver
- Monitor screen

This chapter describes how to start the Trimble GPS Studio application and how to connect to the Starter Kit from the application. It also includes overview descriptions of the *Trimble GPS Studio* window and the *Monitor* window.

Starting the Trimble GPS Studio application

Double-click the icon in the folder where the application is stored.

Trimble GPS Studio screen



***Note** – Additional windows appear within the main Trimble GPS Studio window if you leave them open when you exit the application.*

Menu bar

Select ...	To access ...
File	Preferences and Exit
Connections	New Connection, Auto-Detect, Refresh Com List, and Device Manager
Tools	Data Logger, Data Converter, Flash Loader, and Configurator
Window	Window functions and a list of the open windows
Help	Current release information

Note – By selecting an open window this is brought into view.

Command bar

Click ...	To ...
Version number	Open the <i>About</i> screen.
Connect to Device drop-down list	View the list of devices that you can connect to. Click an item on the list to select it.
New Connection drop-down list	View a list of connection features and COM ports. Click an item on the list to select it.
	Note – This is the featured method for connection used in the user guide.
Data Logger	Log raw data from one or more connected devices.
Data Converter	Convert logged raw data to various formats

Click ...	To ...
Preferences	Configure various program settings.
Exit	Exit the Trimble GPS Studio application

Status bar

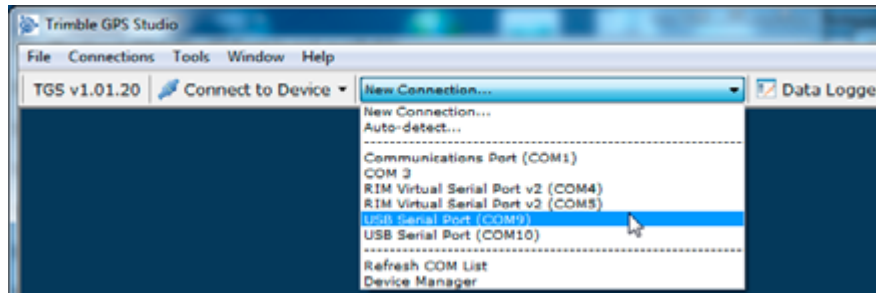
This contains the following display-only status items:

Status item	Options
Monitoring	ON or OFF.
Logging	ON or OFF.
Time	Hours, minutes; AM or PM

Connecting the Trimble GPS Studio application to the GPS receiver

The *New Connection* feature enables you to connect to the GPS receiver and provides auto-detection of baud rates, parity, data bits, and stop bits settings.

1. Click **New Connection...** ▼ and then select the required USB Serial Port (in this example, *USB Serial Port (COM 9)*) from the drop-down list:

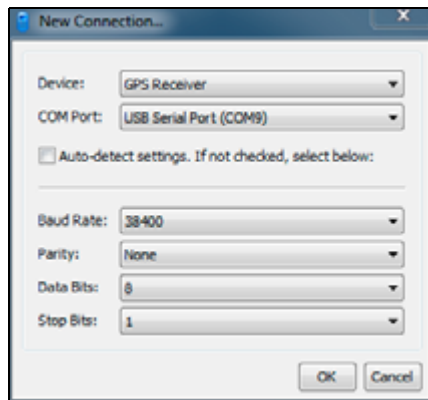


Note – If you know which port serves a particular protocol, select the port for the protocol you want.

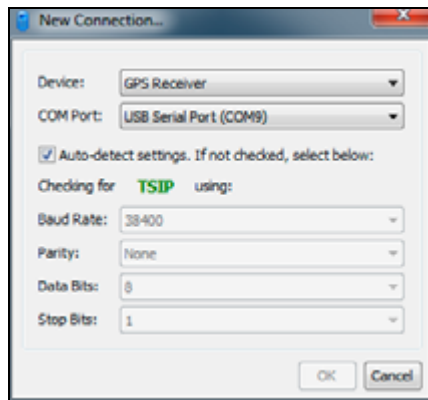
Note – If you do not see the COM ports for the GPS receiver in the list, refresh the list as follows:

1. Select **New Connections / Refresh COM List**.
2. Click the information screen to close it.
3. If it is open, close the **New Connection** screen.
4. Click **New Connection...** ▼ again. The COM port should now appear in the list.

The *New Connection* dialog appears:

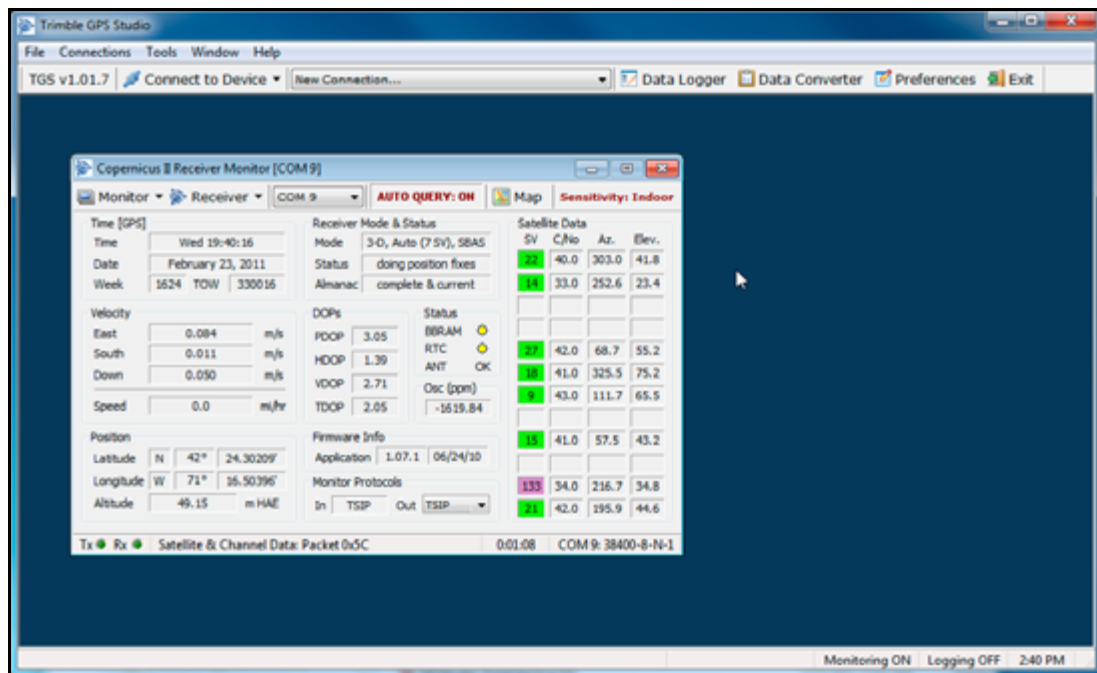


2. Select the *Auto-detect settings* check box. The Trimble GPS Studio application now auto-detects baud rate and other settings in turn for each protocol. A message **Checking for <PROTOCOL> using** appears on screen to show the auto-detect status:

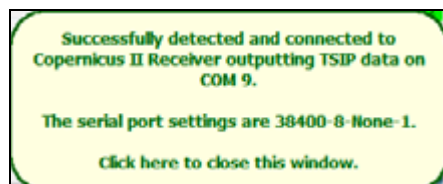


Note – If you clear the check box, only the settings selected in the bottom half of the dialog (for Baud Rate, Parity, Data Bits, and Stop Bits) are used.

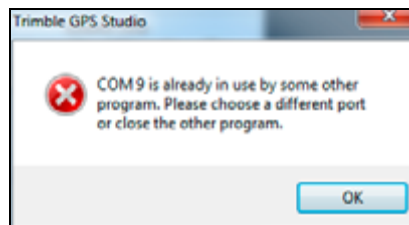
- Click **OK**. The *Monitor* screen appears:



- If the receiver *is* detected, data appears in the *Monitor* screen, and a message screen appears. Click the message screen to close it:



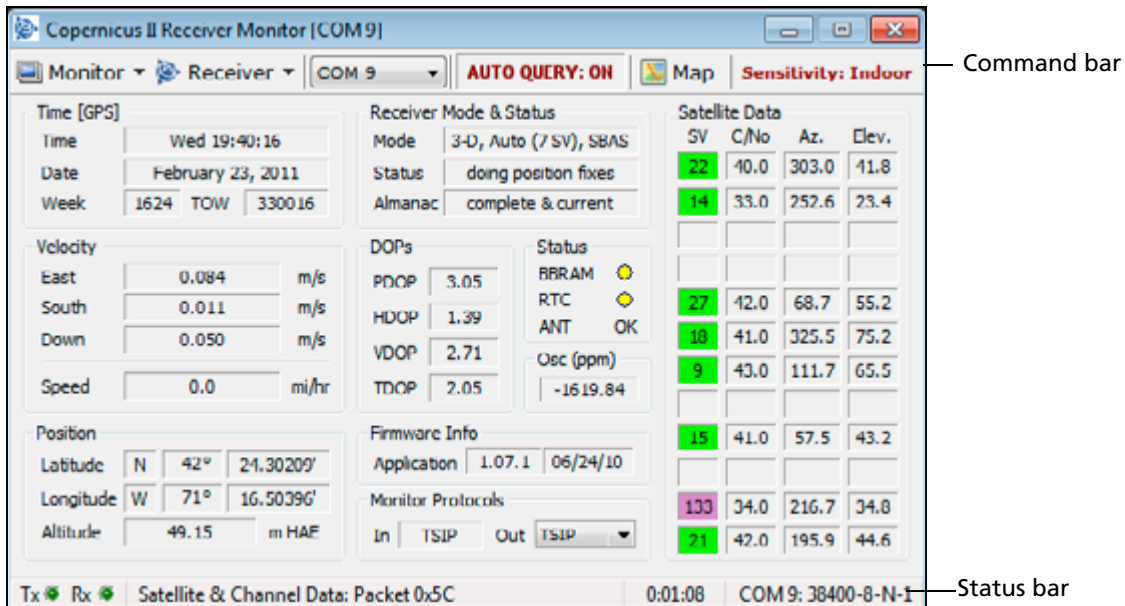
- If the receiver is *not* detected, an error message appears. You can try to resolve the issue by doing the following:



- If you cleared the *Auto-detect settings* check box, select it and then try again.
- Select another COM port and then try again.
- Refresh the COM port list, see [page 15](#).
- Use the On / Off switch to turn off the starter kit and then turn it on again.

Monitor screen

The *Monitor* screen indicates that the Trimble GPS Studio application is connected to the GPS receiver; use it to monitor the receiver performance.

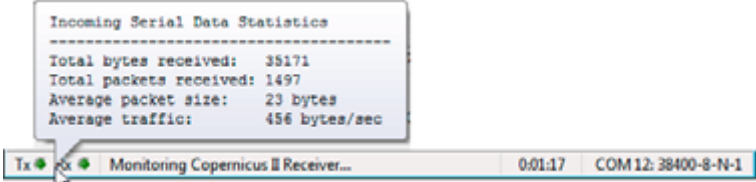


Command bar

Click ...	To ...
Monitor drop-down list	Access a menu that includes raw data, GPS receiver, and GPS system information.
Receiver drop-down list	Access a menu that includes GPS receiver configuration and reset options.
Port drop-down list	Select the appropriate port. When you select a port from the list, the <i>Port Settings</i> dialog appears.
Auto Query (ON or OFF)	Click, if ON, to request additional information from the GPS receiver (this information is not automatically sent by the receiver).
Map	Open the <i>Position Map</i> window.
Sensitivity	Read-only field with either "Outdoor" or "Indoor" as value.

Status bar

This contains the following display-only status items:

Status item	Options
Tx	<p>If blinking green, this means that the application is transmitting to the GPS receiver. Mouse over <i>Tx</i> to view the <i>Incoming Serial Data Statistics</i>:</p> 
Rx	If blinking green, this means that the application is receiving from the GPS receiver.
Elapsed Time	The hours, minutes, and seconds that the application has been connected to the receiver.
Port	COM port settings

Configuring the Receiver

In this chapter:

- Configuring the GPS port
- Configuring outputs
- Configuring PPS
- Configuring NMEA
- Completing the configuration

This chapter describes how to configure the GPS receiver. To do this, you will configure the GPS port, Outputs, PPS, and NMEA.

***Note** – GPS modules from the Condor family have a limit of 8 “Saves” in the Configure Receiver screen. After this, you must reflash the device. See [Using the Flash Loader application, page 39](#).*

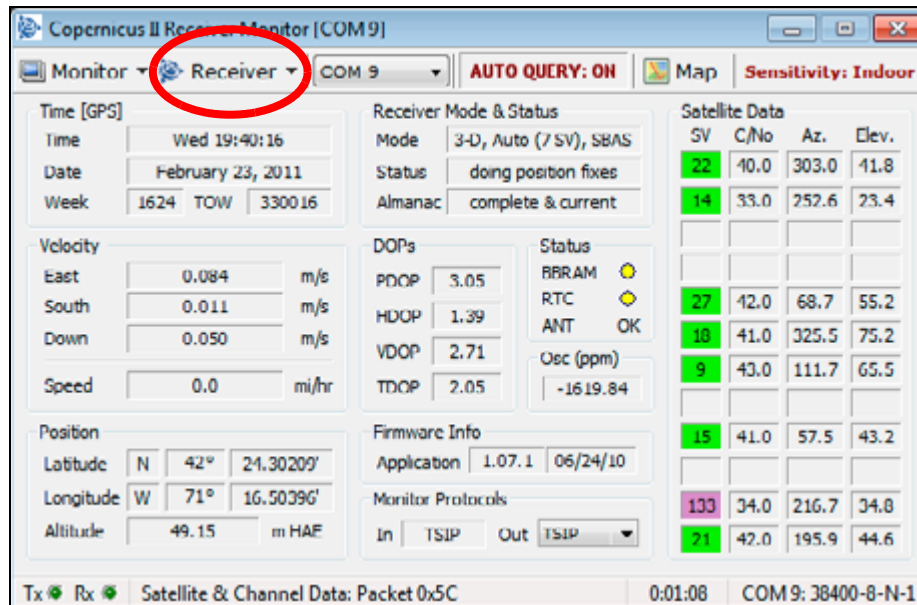
***Note** – Change the settings that you require and then click **Set**. Only click **Save Configuration** when you are completely done.*

***Note** – The options that are available from the Configure Receiver drop-down list depend on the device that is being configured.*

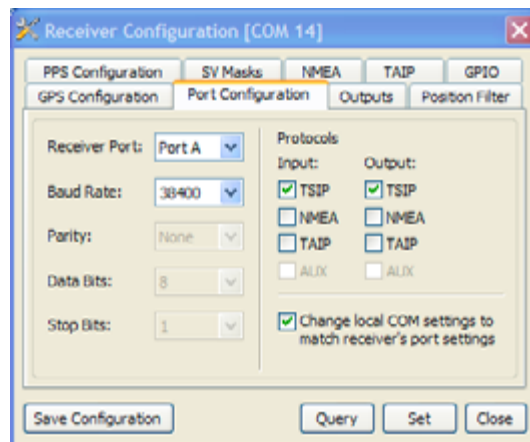
Configuring the GPS port

1. From the *Monitor* window, click **Receiver** and then select *Configure* from the drop-down list:

Note – Options available within the *Configure Receiver* box depend on the device being configured.



2. In the *Receiver Configuration* dialog, select the *Port Configuration* tab:



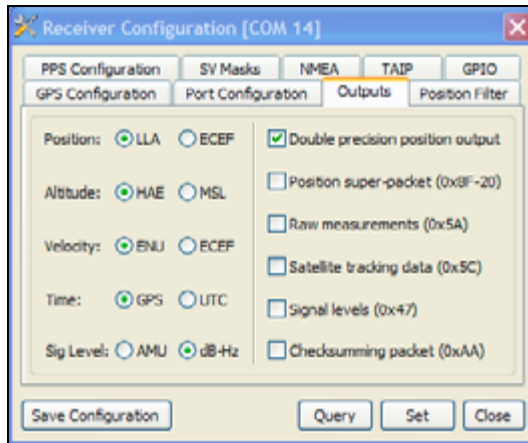
3. Select:
 - The required *Receiver Port*, *Baud Rate*, *Parity*, *Data Bits*, and *Stop Bits*.
 - One *Input* and one *Output* protocol.
4. Click **Set** to save the settings on this tab.

Note – Do not click **Save Configuration** until you have completed changes on all tabs.

5. Continue with [Configuring outputs](#) or go to [Completing the configuration](#)

Configuring outputs

1. In the *Receiver Configuration* dialog, select the *Outputs* tab:



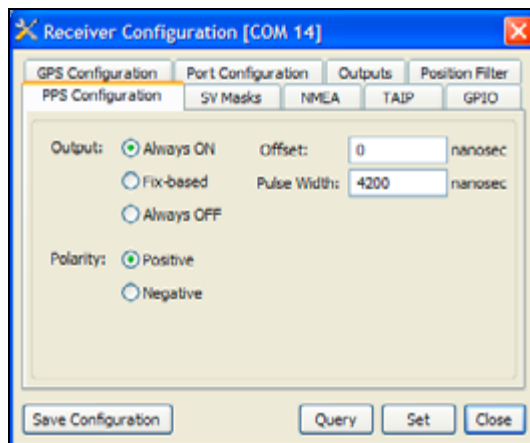
2. Select the required setup options.
3. Click **Set** to save the settings on this tab.

Note – Do not click **Save Configuration** until you have completed changes on all tabs as needed.

4. Continue with [Configuring PPS](#) or go to [Completing the configuration](#).

Configuring PPS

1. In the *Receiver Configuration* dialog, select the *PPS Configuration* tab.:



2. Select an option from the *Output* list. The options are:
 - *Always ON*. PPS is present even without a GPS fix and will free-run until a fix is obtained.
 - *Fix-based*. The PPS is output only when the receiver has a fix.

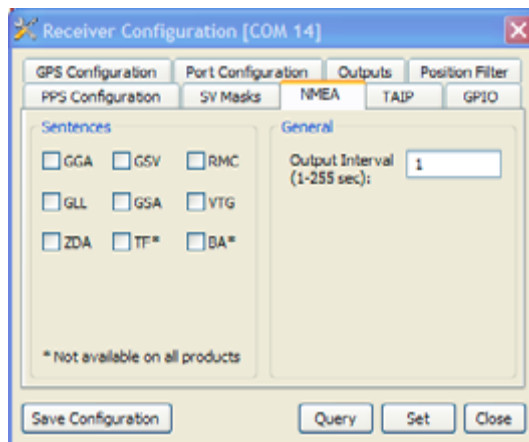
- *Always OFF.*
- 3. Enter values or select settings for additional fields as required. The parameters and settings in this step are determined by the receiver being configured:
 - Enter a value in the *Offset* field (units are in nanoseconds).
 - Enter a value in the *Pulse Width* field (units are in nanoseconds).
 - Select an option in the *Polarity* field (positive or negative).
- 4. Click **Set** to save the settings on this tab.

Note – Do not click **Save Configuration** until you have completed changes on all tabs as needed.

- 5. Continue with [Configuring NMEA](#) or go to [Completing the configuration](#)

Configuring NMEA

- 1. In the *Receiver Configuration* dialog, select the *NMEA* tab:



- 2. Select the required setup options:
 - *Sentences:* Select one or more NMEA messages. The options are:

Message	Description
GGA	GPS fix data
GSV	GPS satellites in view
RMC	Recommended minimum specific GPS/Transit data
GLL	Geographic position - Latitude/Longitude
GSA	GPS DOP and active satellites
VTG	Track made good and ground speed
ZDA	Time and date
TF ¹	Receiver status and position fix
BA ¹	Antenna status
GST ¹	GPS Pseudo-range noise statistics
CHN ¹	GPS channel status

¹Not available on all products

- *General:* Enter an integer (between 1 and 255) to represent the output interval in seconds.

3. Click **Set** to save the settings on this tab.

Note – Do not click **Save Configuration** until you have completed changes on all tabs as needed.

4. If required, you can now click any other tab to set additional parameters or go to [Completing the configuration](#).

Completing the configuration

1. Once you have made all changes, in the last tab click **Set** and then click **Save Configuration**.

Note – GPS modules from the Condor family have a limit of 8 “Saves” in the Configure Receiver screen. After this, you must reflash the device. See [Using the Flash Loader application, page 39](#).

2. Click **Close** to close the *Configure Receiver* dialog.

Using the Core Tools

In this chapter:

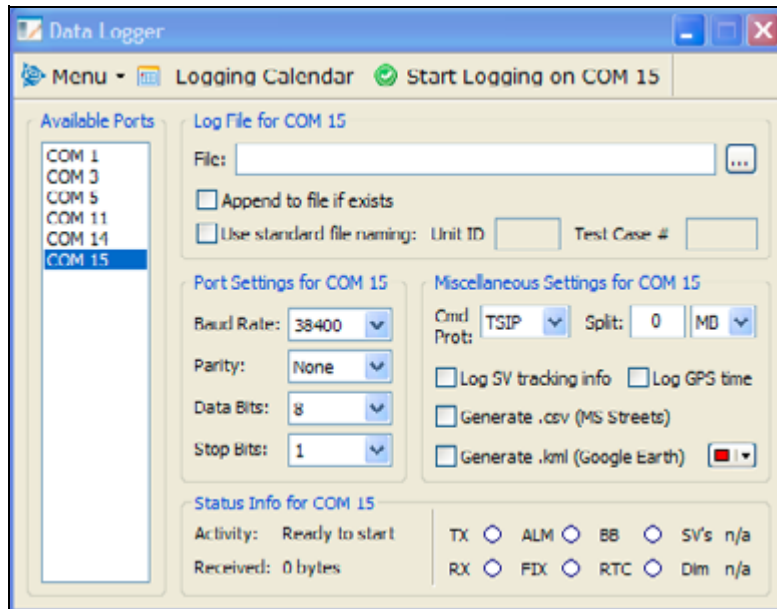
- [Logging the GPS receiver output](#)
- [Converting output logs](#)
- [Sending raw data to the receiver](#)
- [Managing configurations](#)
- [Using the Flash Loader application](#)

This chapter describes how to use the core tools of the Trimble GPS Studio application.

These tools are useful for a range of activities including debugging, testing new commands, systematically configuring GPS receivers, and updating receiver firmware.

Logging the GPS receiver output

1. In the command bar of the main *Trimble GPS Studio* screen, click **Data Logger**:



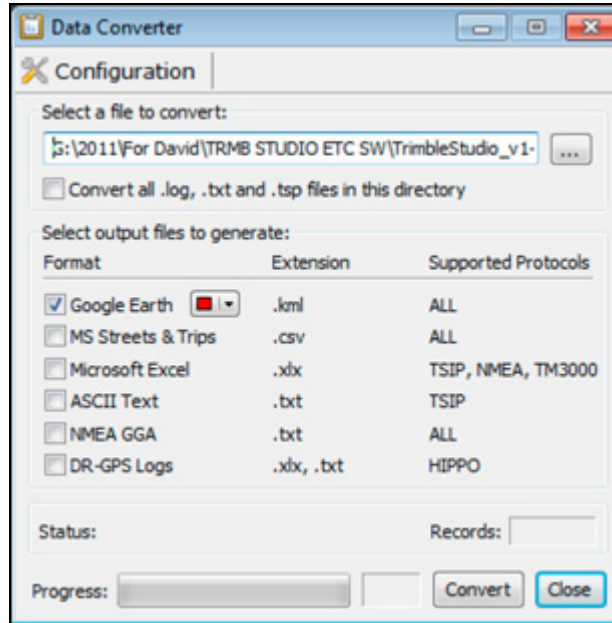
2. From the *Available Ports* list, select the COM port that connects to your device.
3. In the *Log File* field, enter a filename and path or click the **Browse** button to select the path.
4. If appropriate, select the *Use standard file naming* check box and then complete the *Unit ID* and *Test Case #* fields.
5. Select the correct protocol and logging options.
6. Click **Start Logging**.

Note – If you are working with more than one receiver, you can create additional logs on the other available COM ports.

Converting output logs

It is sometimes useful to convert the files from the Data Logger into formats used by other applications, for example Google Earth or the Microsoft Excel® spreadsheet software:

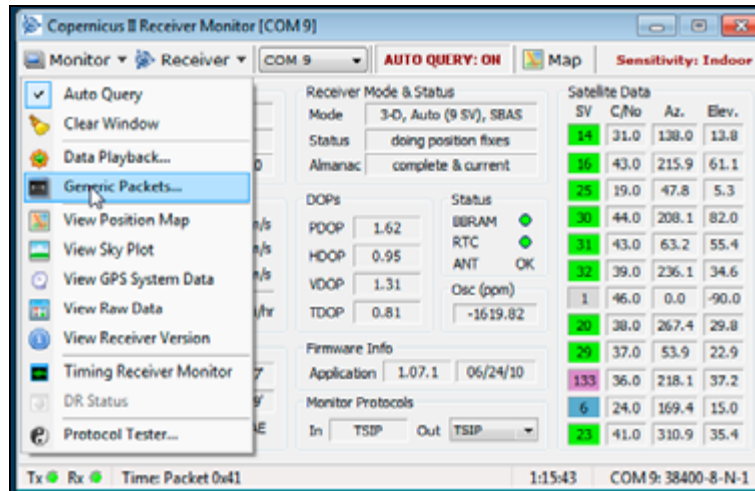
1. In the command bar of the main *Trimble GPS Studio* screen, click **Data Converter**:



2. In the *Select a file to convert* field, browse to and then select the file that you want to convert.
3. In the *Select output files to generate* section, select the check box next to each type of output file that you want to generate.
4. Click **Convert**. The converted files appear in the source file directory.

Sending raw data to the receiver

1. In the *Monitor* screen, select *Monitor / Generic Packets*:



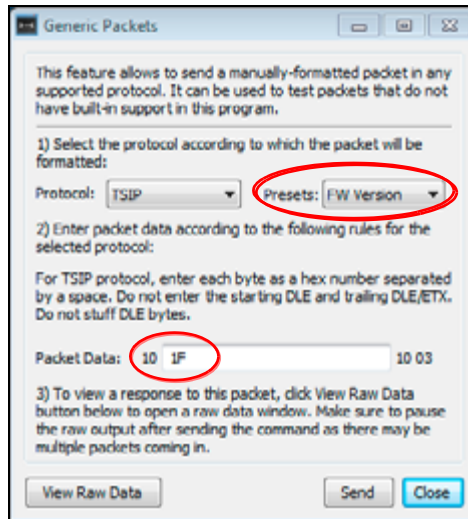
2. In the *Generic Packets* window, in the first section:



- Select the required *Protocol* to use for sending the raw data from the drop-down list.
- **Optional.** Select an existing message from the *Presets* drop-down list. This message populates the *Packet Data* field (in the second section) with data in accordance with the selected protocol.



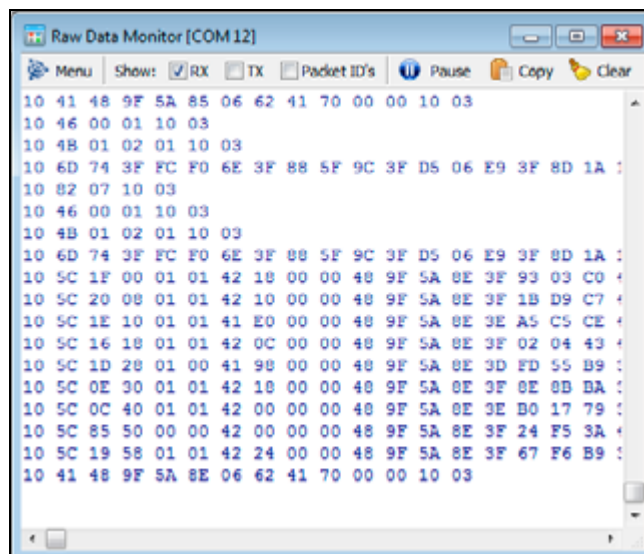
Tip – You can use *Presets* to see an example of how to enter a packet for the selected protocol. You can then edit the *Packet Data* field as required for your selected message.



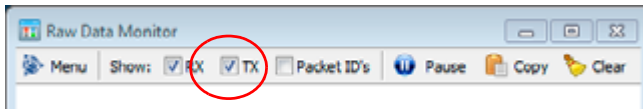
3. If you did not select a *Presets* message, enter your own data in the *Packet Data* field.

Note – Enter the user data only, not the start and end bytes that appear to the left and right of the field.

4. Click **View Raw Data**. This opens the *Raw Data Monitor* screen where you can view data from the GPS receiver—by default, only the *Show RX* check box is selected, meaning that the window displays only data received by the application from the GPS receiver:

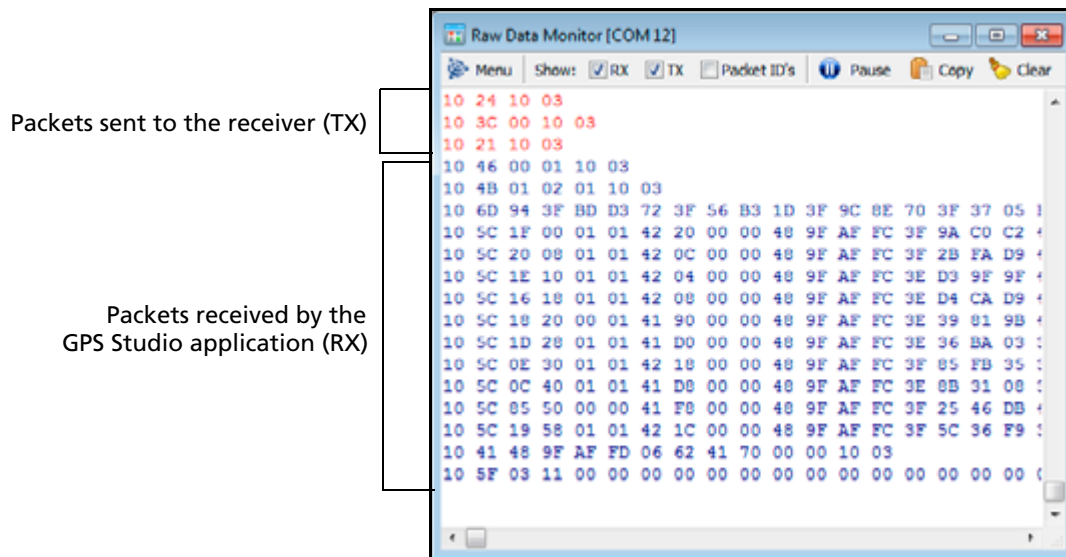


Note – To also view data sent to the GPS receiver, select the TX check box. Sent data appears in red on the screen:



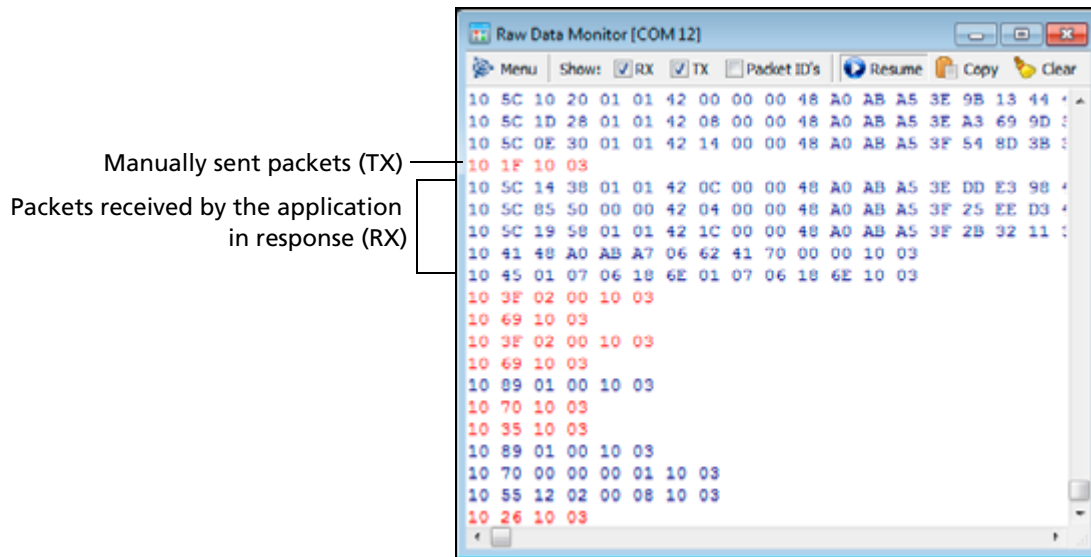
Note – Depending on the GPS receiver and its setup—and whether the application GPS Studio has Auto Query set to ON—the Raw Data Monitor screen may immediately show data being received by the application.

5. Press **Pause / Resume** as required so that you can examine the stream of data more easily:



6. To return to the *Generic Packets* window, close the screen.
7. To send the raw data to the receiver, in the *Generic Packets* window, click **Send**.

- Click **View Raw Data** again—you can now see the packets that you specified for sending to the GPS receiver, and the packets returned in response:



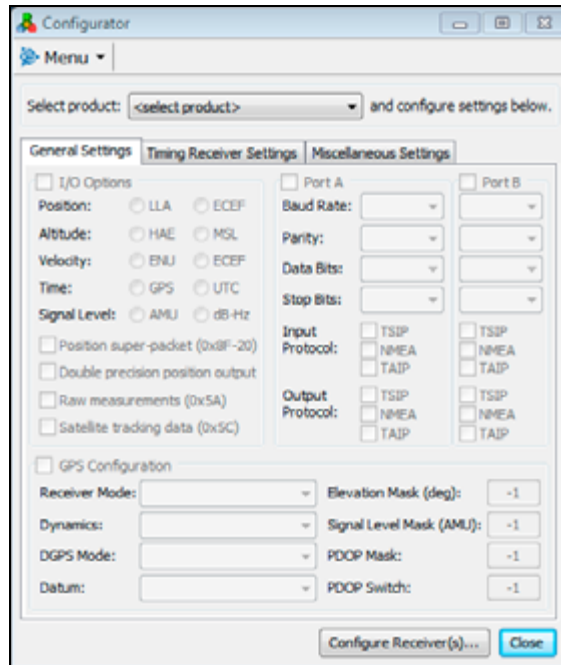
Note: Red: Sent (by TGS) data; Blue: Received (from GPS module) data.

- Return to the *Generic Packets* screen and then click **Close**.

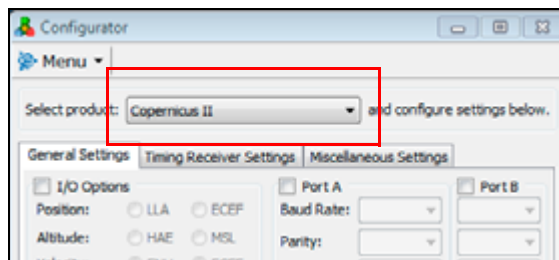
Managing configurations

You can load receiver configurations into the GPS Studio application's *Configurator* and then edit the settings if required (optional). After you have finalized a configuration, you can then save it to a file. You can open this file later and use it to configure one or more receivers.

1. From the menu bar of the main *Trimble GPS Studio* window, select *Tools / Configurator*:

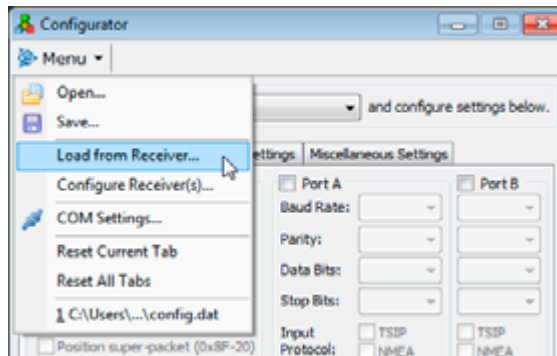


2. Select the product.

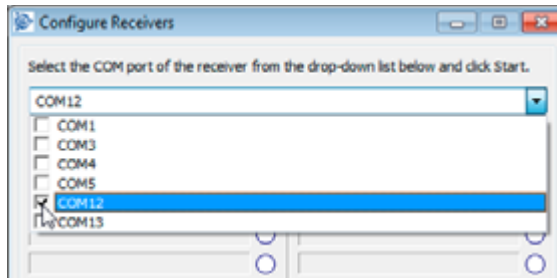


Loading the configuration from the receiver

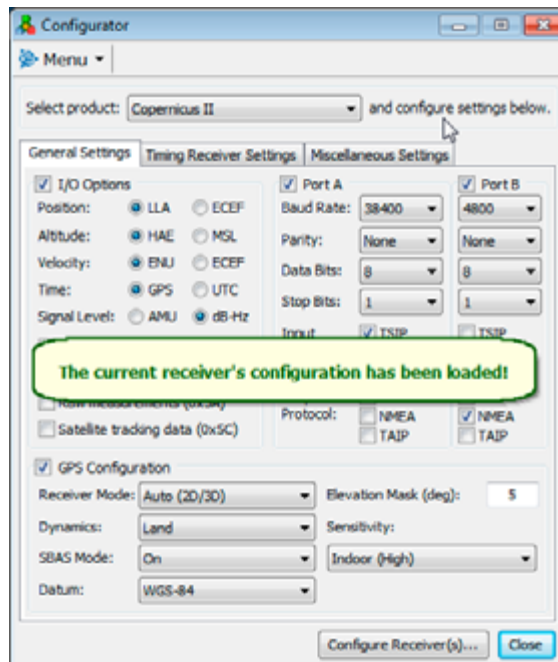
1. From the *Menu* drop-down list, select *Load from Receiver* to load the settings from the receiver into the Configurator:



2. In the *Configure Receivers* dialog, select the required COM port from the drop-down list and then click **Start**:

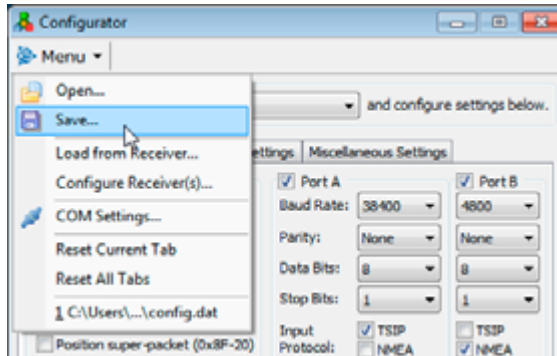


This loads the configuration into the *Configurator* dialog:

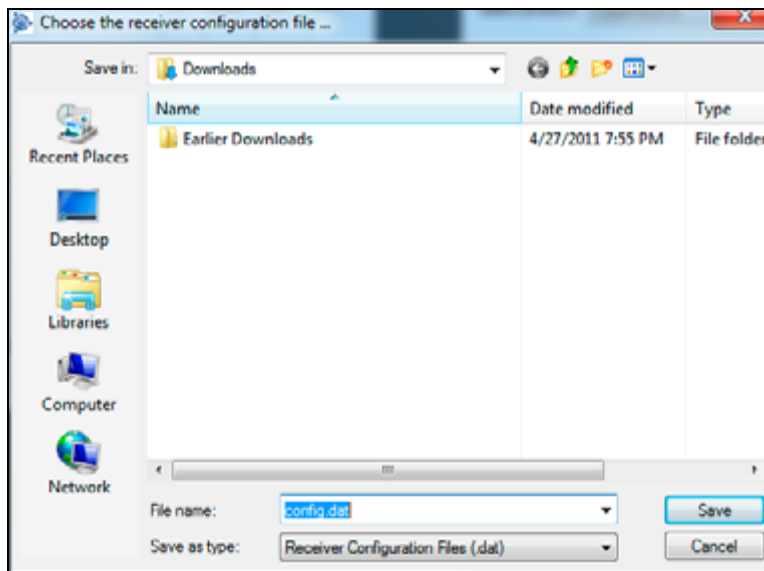


Saving a configuration file

1. From the *Menu* drop-down list, select *Save*:

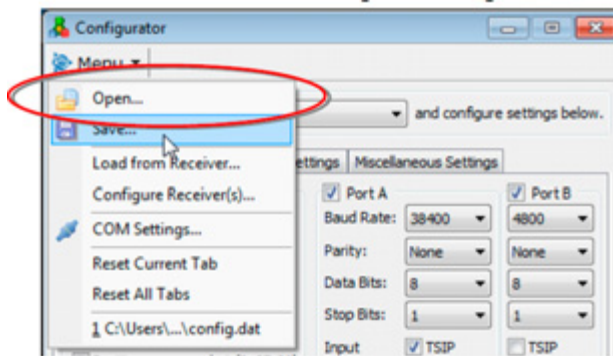


2. In the *Choose the receiver configuration file* dialog, browse to the required location, rename the file as appropriate and then click **Save**:

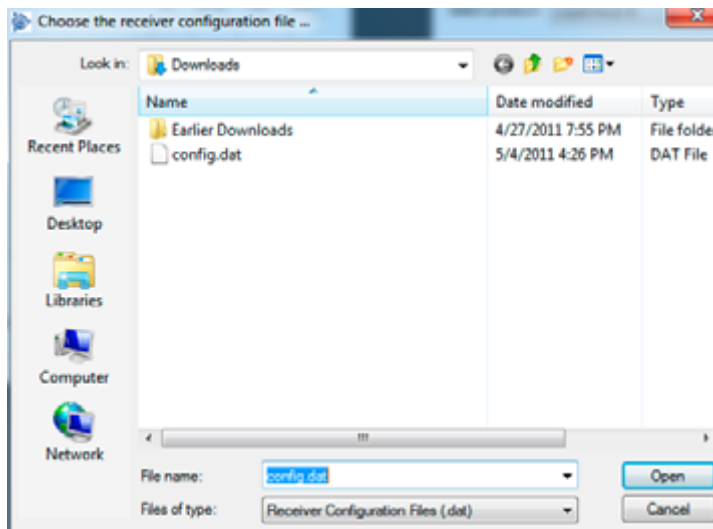


Opening a configuration file

1. From the *Menu* drop-down list, select *Open*:

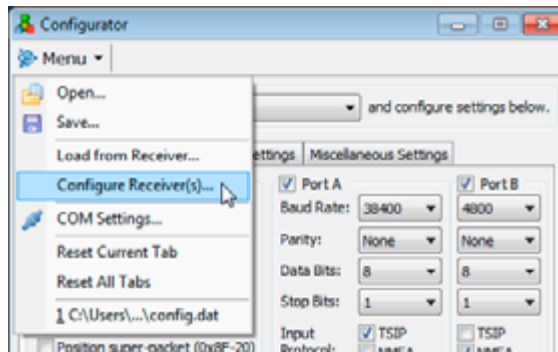


2. In the *Choose the receiver configuration file* dialog, browse to the required location, select the required file and then click **Open**:



Configuring receivers using the Configurator settings

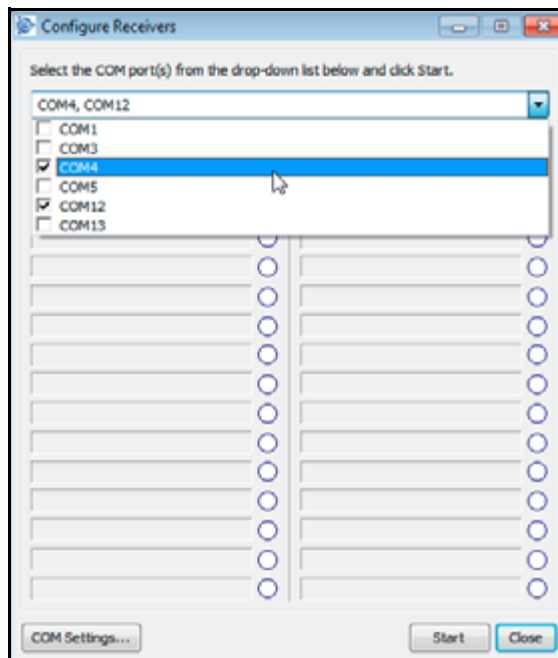
1. From the *Menu* drop-down list, select *Configure Receiver(s)*:



Note – Alternatively, click **Configure Receiver(s)**.

2. In the *Configure Receivers* dialog, select one or more COM ports from the top drop-down list and then click **Start**:

Note – You would select multiple COM ports if you are working with more than one receiver.



- The receiver(s) are configured, and a message appears in the *Configure Receivers* window. Click **Close**:



- Click **Close** in the *Configurator* window.

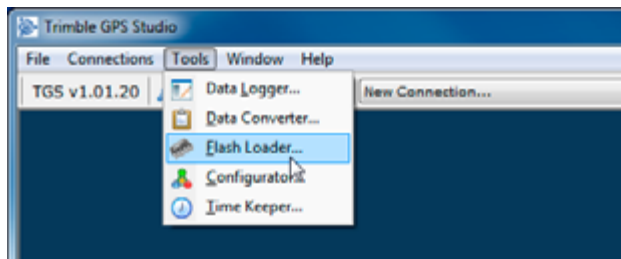
Using the Flash Loader application

Use the Flash Loader application to load firmware onto the GPS receiver.

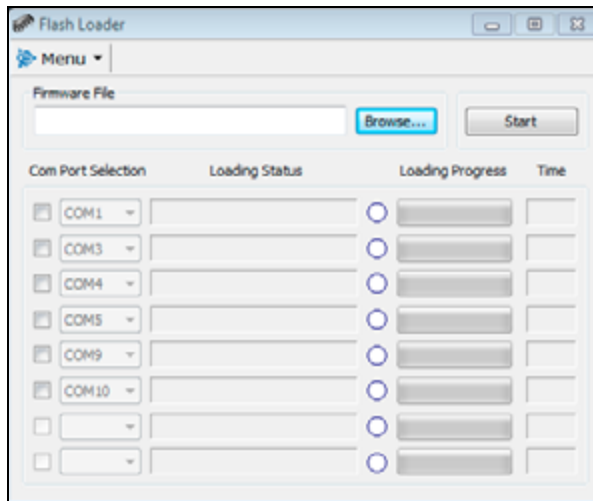


Tip – To use the Flash Loader, your computer must be physically connected to the GPS receiver.

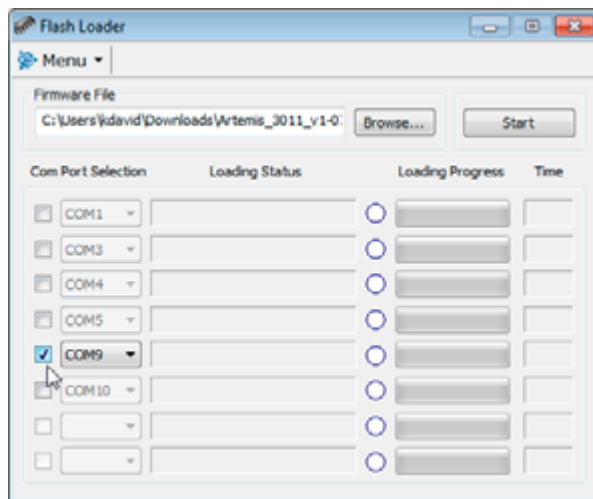
- Download and extract the new firmware.
- From the main *Trimble GPS Studio* window, select *Tools / Flash Loader*:



3. In the *Flash Loader* dialog, click **Browse**:



4. In the *Choose the firmware file* dialog, navigate to the required firmware file and then click **Open**.
5. In the *Com Port Selection* list, select the required communications port and then click **Start**:



The current firmware is erased and the new firmware is loaded.

6. When the firmware has been successfully loaded, close the *Flash Loader* window.
7. Turn the GPS receiver off and then turn it on again.
8. Connect to the GPS receiver, see [Connecting the Trimble GPS Studio application to the GPS receiver, page 15](#).

The new firmware version appears in the Monitor screen, in the *Firmware Info* section.

Using the Position Map

In this chapter:

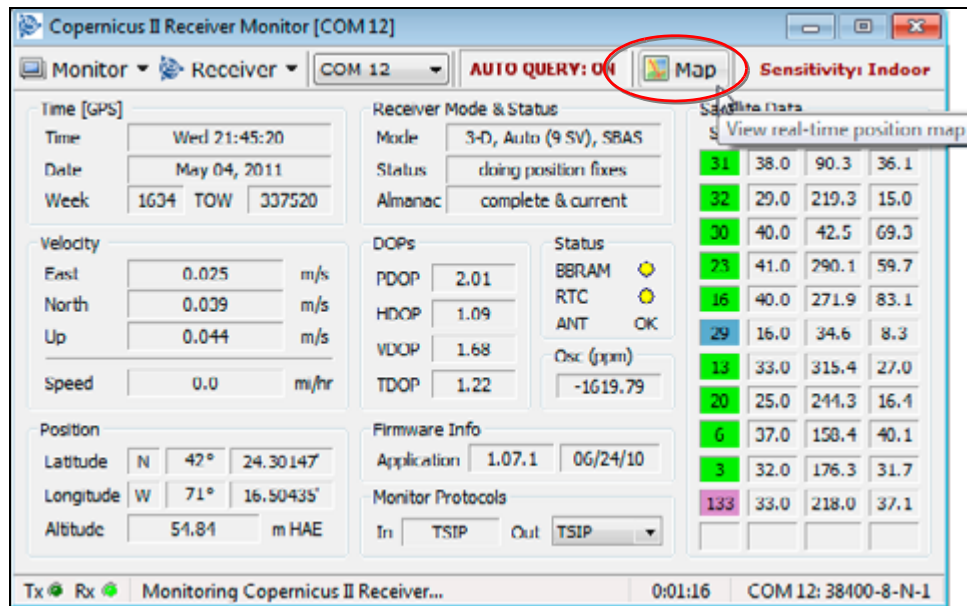
- Position Map tab
- Position Plot (Horizontal, 2D) tab

This chapter describes how to use the *Position Map* dialog, accessed from the *Monitor* window.

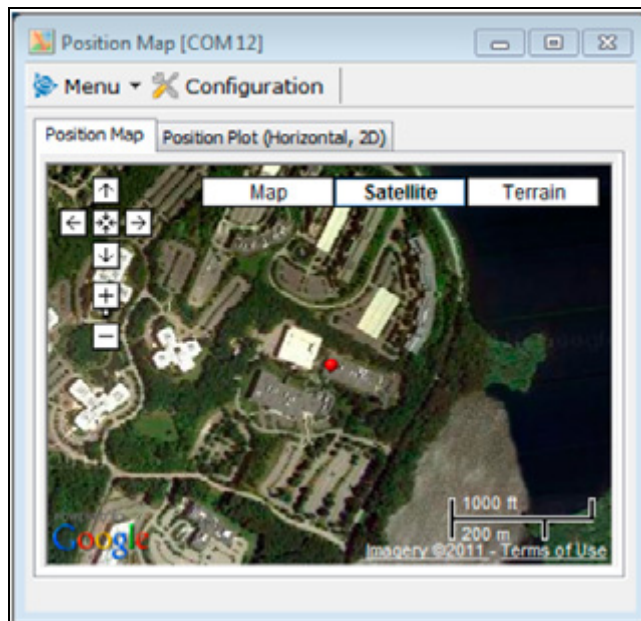
The *Position Map* dialog has two tabs: The *Position Map* tab, and the *Position Plot* tab.

Position Map tab

If you are connected to the Internet, the *Position Map* screen enables you to view Google Maps for your location in the *Position Map* tab. In the *Monitor* window, click **Map**:

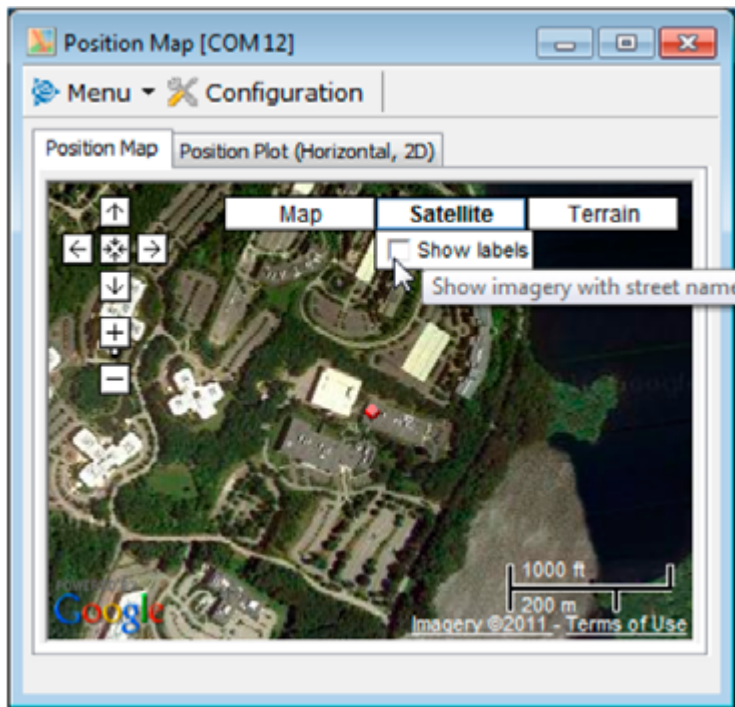


The *Position Map* screen opens, showing the *Position Map* tab—wait for Google Map data to load. The default view is the Satellite view, and the screen shows the usual Google Map controls:

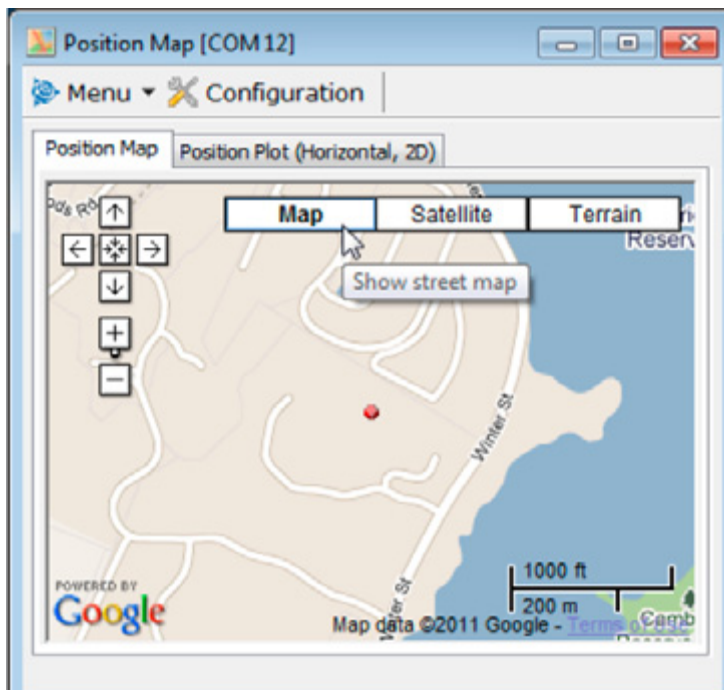


You can now do the following:

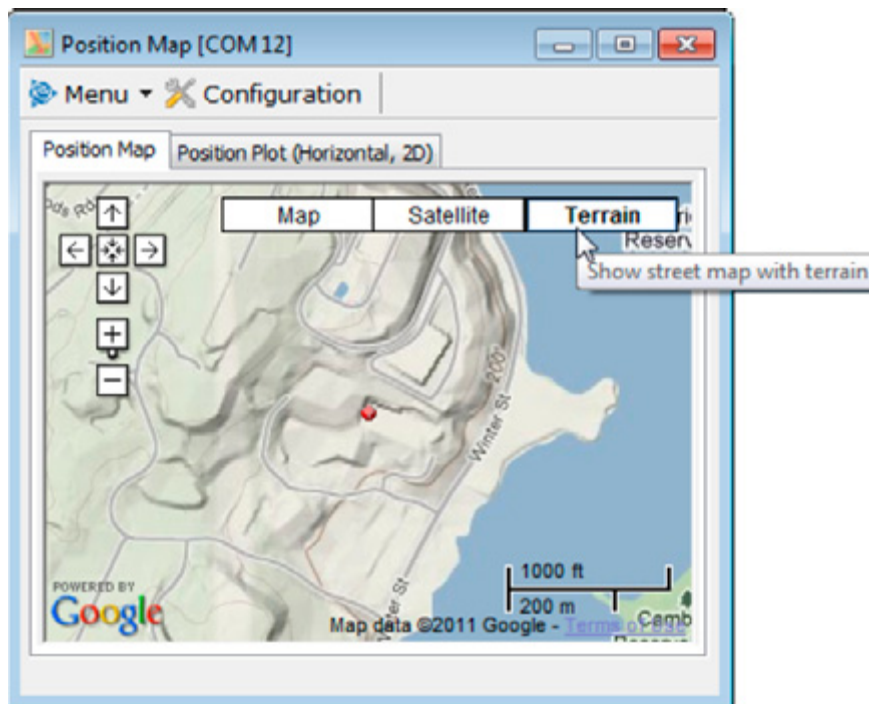
- Mouse over the **Satellite** button to see the *Show labels* check box. Select or clear this check box to turn overlay map labels on or off:



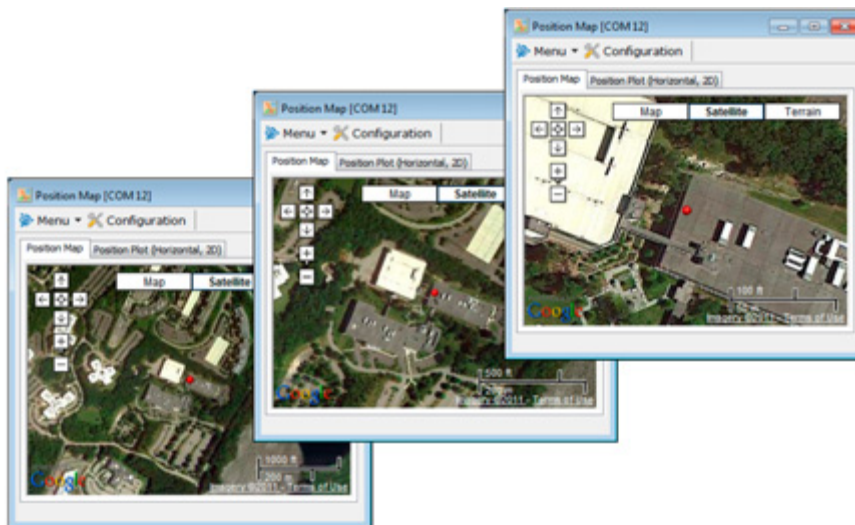
- Click **Map** to show the street map view:



- Click **Terrain** to show the terrain view:

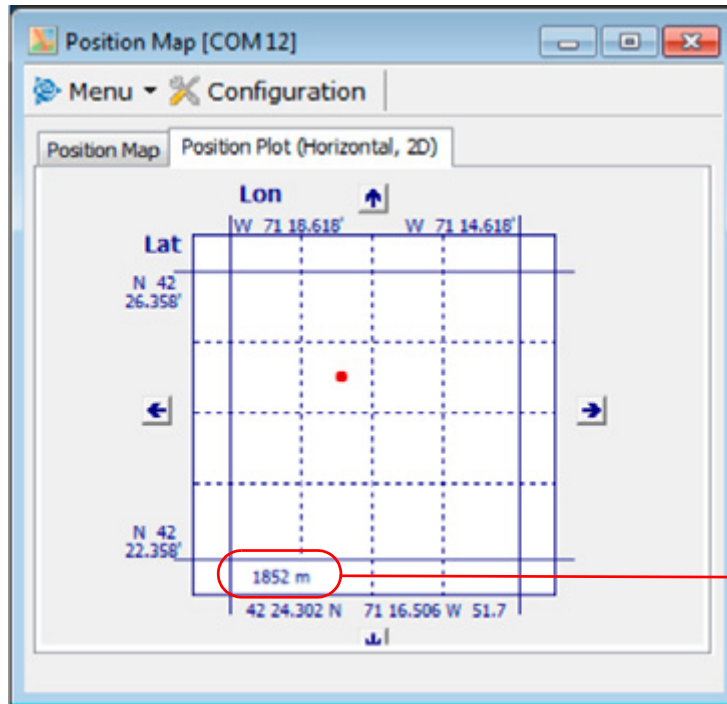


Tip – To use the screen features (such as *Zoom In*, *Zoom Out*, *Erase*, and *Measure Distance*), you can either use the screen controls, or select them from the *Menu* drop-down list. The following example shows how you can select a closer view by using the *Zoom In* feature:



Position Plot (Horizontal, 2D) tab

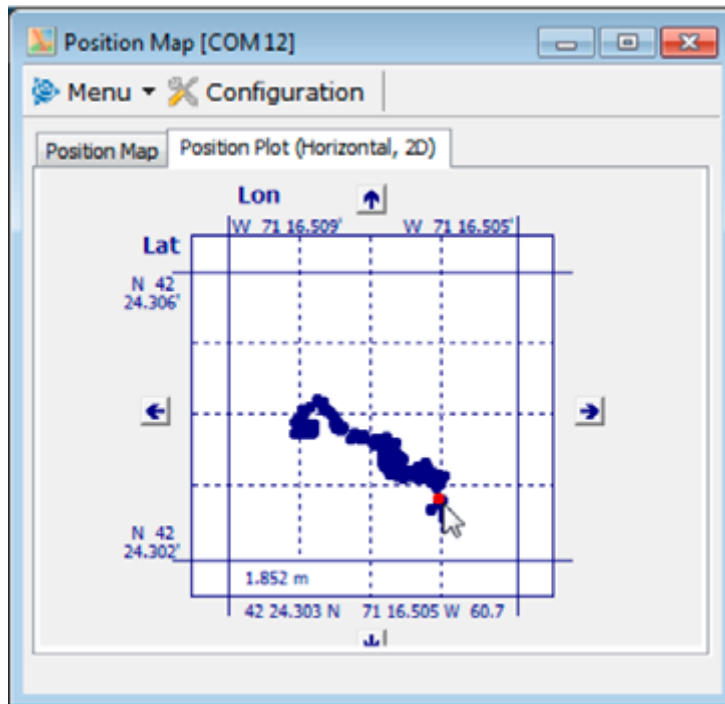
Click the *Position Plot (Horizontal, 2D)* tab:



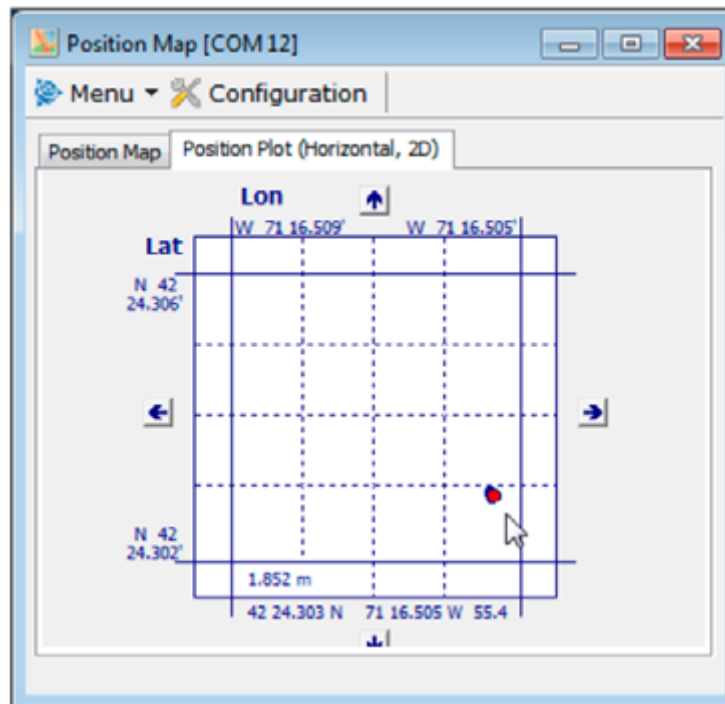
Number in meters shows the scale for the graticule



Tip – To use the screen features (such as *Zoom In*, *Zoom Out*, and *Erase*), you can either use the screen controls, or select them from the *Menu* drop-down list. The following example shows the *Position Plot* tab using the *Zoom In* feature:



To erase the displayed plot, select *Menu / Erase*:





NORTH AMERICA

Trimble Navigation Limited
Corporate Headquarters
935 Stewart Drive
Sunnyvale, CA 94085
+1-800-787-4225
+1-408-481-7741

EUROPE

Trimble Navigation Europe
Phone: +46-8-622-12-79

KOREA

Trimble Export Ltd, Korea
Phone: +82-2-555-5361

CHINA

Trimble Navigation Ltd, China
Phone: +86-10-8857-7575



trimble.com